

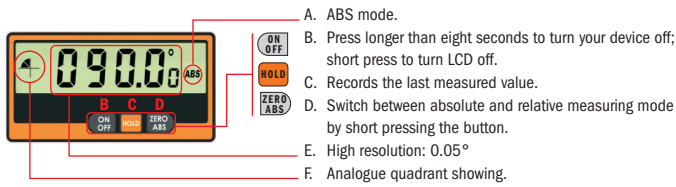
DIGITAL ANGLE FINDER



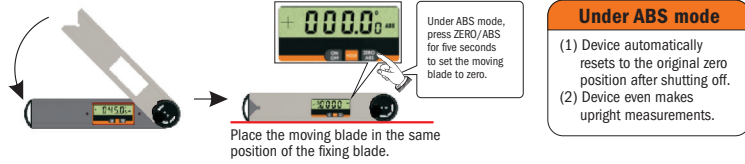
DIGITAL ANGLE FINDER

DAF-001

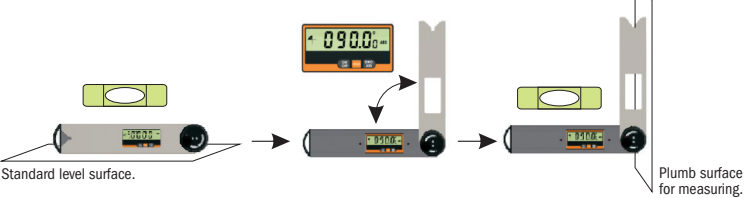
1. BUTTONS AND LCD DISPLAY



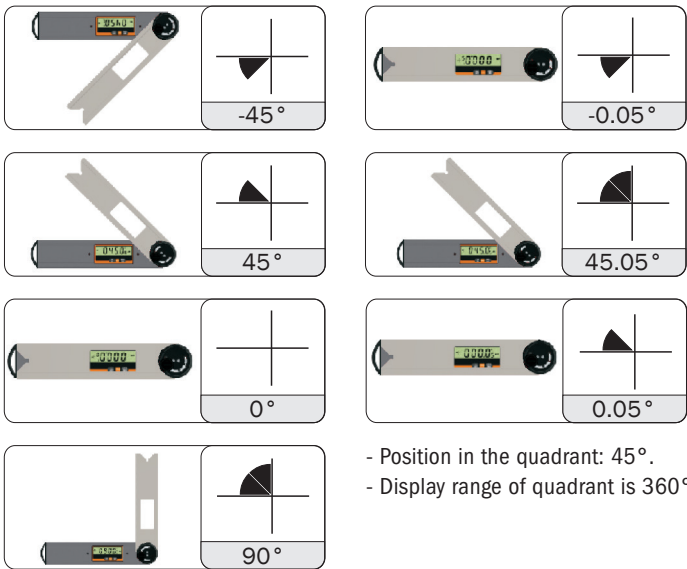
2. MEASURING IN ABSOLUTE (ABS) MODE



3. USING A HIGH QUALITY LEVEL VIAL

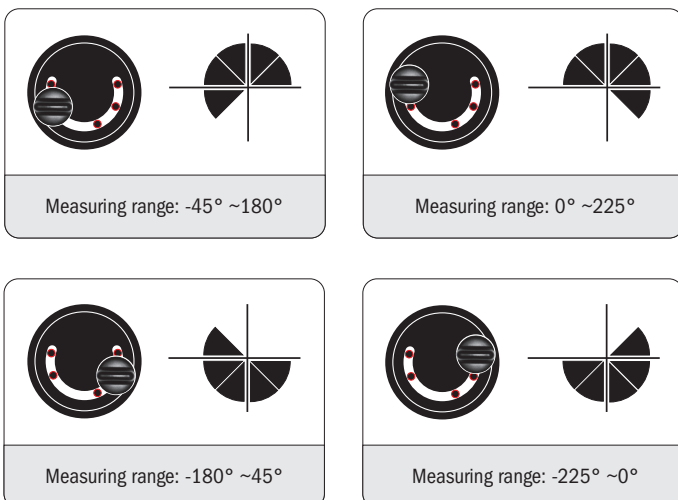


4. ANALOGUE QUADRANT FOR MOVING BLADE

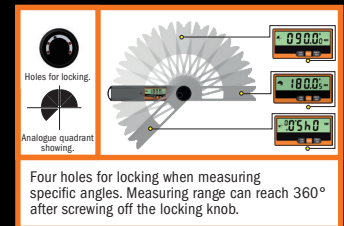
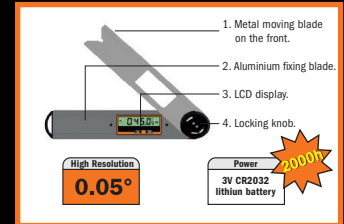


5. LOCKING YOUR DIGITAL ANGLE FINDER FOR MEASURING

Make different measuring by locking at four different locking holes.



Notice: measuring range can reach 360° after screwing off the locking knob.



NOTICE

- Clean digital angle finder with mild liquid soap and a damp cloth. Never dip into water.
- Don't mark bar with any electric engraver or scratch it.



INSTRUCTION

Imported by
CMT ORANGE TOOLS

www.cmtorangetools.com



03.55.0135 VFRS-2022.06

